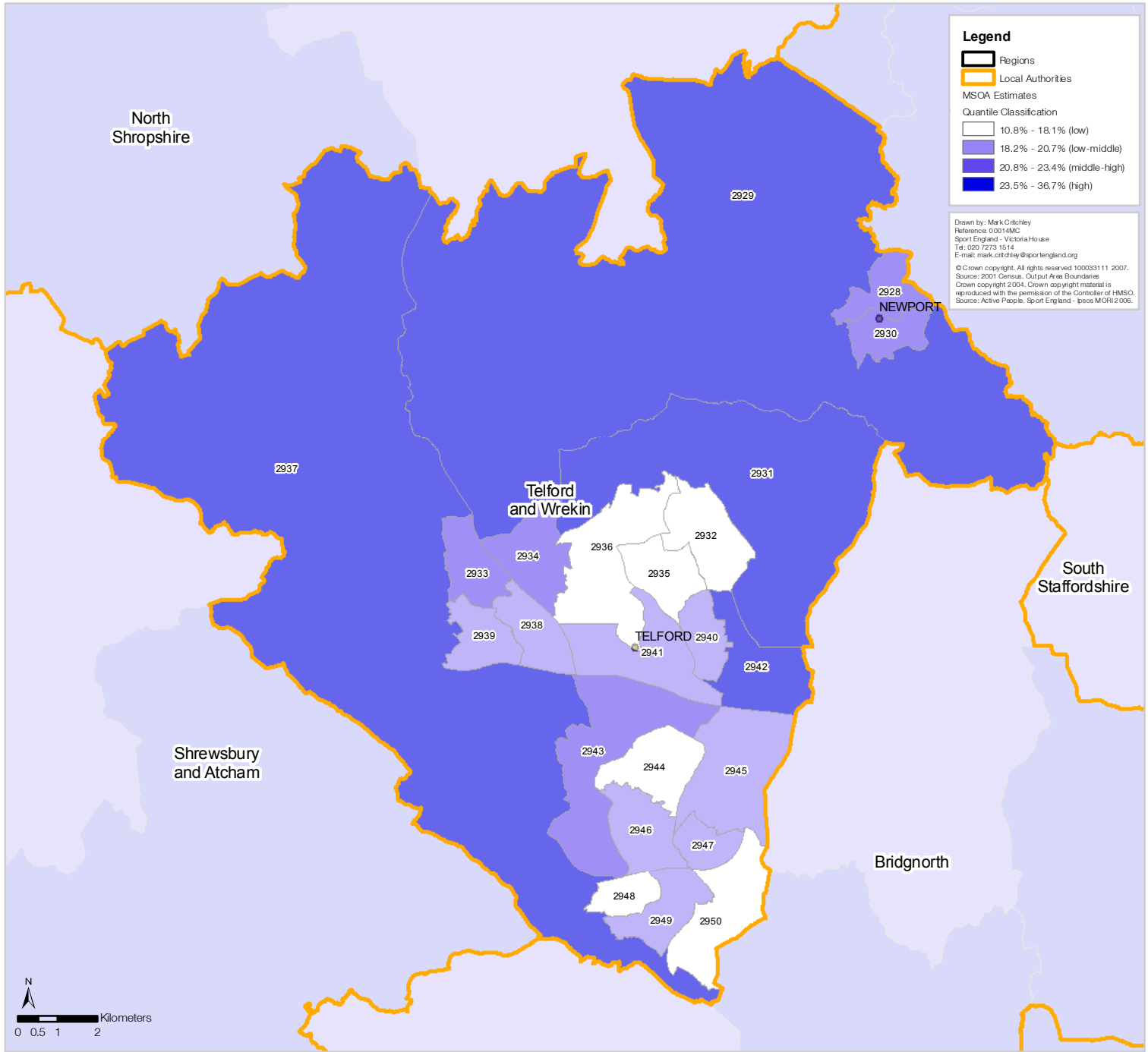


Telford and Wrekin Unitary Authority Participation (3 x 30) Estimates by Middle Super Output Area (MSOA)



Legend

- Regions
- Local Authorities

MSOA Estimates

Quantile Classification

- 10.8% - 18.1% (low)
- 18.2% - 20.7% (low-middle)
- 20.8% - 23.4% (middle-high)
- 23.5% - 36.7% (high)

Drawn by: Mark Critchley
 Reference: 0014M0
 Sport England - Victoria Ho use
 Tel: 020 7273 1514
 E-mail: mark.critchley@sportengland.org
 © Crown copyright. All rights reserved 100033111 2007.
 Crown copyright 2004. Crown copyright material is reproduced with the permission of the Controller of HMSO. Source: Active People, Sport England - Ipsos MORI 2006.

*MSOA Code	Estimate	Lower **CL	Upper **CL
E02002928	23.24%	18.18%	29.45%
E02002929	25.01%	19.69%	31.53%
E02002930	22.14%	17.12%	28.43%
E02002931	23.54%	18.45%	29.75%
E02002932	17.45%	13.50%	22.58%
E02002933	21.98%	17.18%	27.95%
E02002934	21.50%	16.68%	27.53%
E02002935	17.34%	13.36%	22.52%
E02002936	17.72%	13.72%	22.91%
E02002937	23.55%	18.52%	29.70%
E02002938	18.50%	14.32%	23.89%
E02002939	20.54%	15.92%	26.39%
E02002940	19.21%	14.93%	24.69%
E02002941	18.78%	14.68%	24.00%
E02002942	27.02%	21.01%	34.22%
E02002943	22.88%	17.99%	28.88%
E02002944	16.78%	13.01%	21.74%
E02002945	18.86%	14.74%	24.14%
E02002946	19.56%	15.30%	24.97%
E02002947	18.30%	14.13%	23.69%
E02002948	16.17%	12.39%	21.18%
E02002949	19.24%	14.88%	24.81%
E02002950	16.87%	13.00%	21.93%

*Add E0200 to MSOA map label to reference correct code in table.
 ** Confidence Level

Participation is defined as the percent of the adult population participating in at least 30 minutes of sport and active recreation (including recreational walking and cycling) of at least moderate intensity on at least 3 days a week.