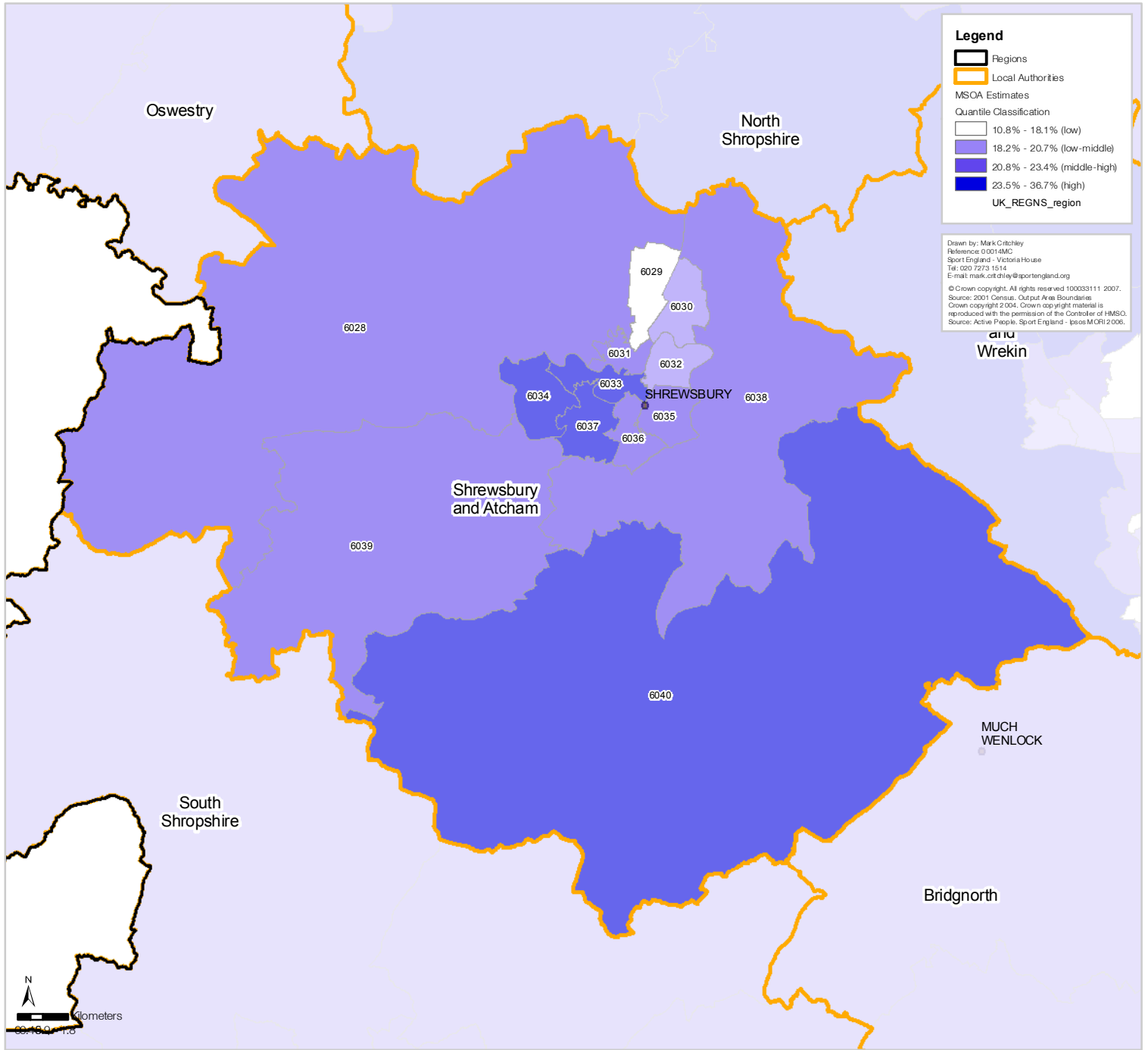








Shrewsbury and Atcham District Council Participation (3 x 30) Estimates by Middle Super Output Area (MSOA)



Legend

-  Regions
-  Local Authorities
- MSOA Estimates
- Quantile Classification
-  10.8% - 18.1% (low)
-  18.2% - 20.7% (low-middle)
-  20.8% - 23.4% (middle-high)
-  23.5% - 36.7% (high)
- UK_REGNS_region

Drawn by: Mark Critchley
 Reference: 00014MC
 Sport England - Victoria House
 Tel: 020 7273 1514
 E-mail: mark.critchley@sportengland.org
 © Crown copyright. All rights reserved 100033111 2007.
 Source: 2001 Census. Output Area Boundaries
 Crown copyright 2004. Crown copyright material is reproduced with the permission of the Controller of HMSO.
 Source: Active People. Sport England - Ipsos MORI 2006.

*MSOA Code	Estimate	Lower **CL	Upper **CL
E02006028	22.59%	17.79%	28.26%
E02006029	17.76%	13.73%	22.67%
E02006030	19.55%	15.14%	24.88%
E02006031	21.90%	17.15%	27.56%
E02006032	19.36%	15.10%	24.48%
E02006033	25.59%	20.17%	31.95%
E02006034	24.43%	19.33%	30.42%
E02006035	22.47%	17.55%	28.34%
E02006036	22.75%	17.88%	28.54%
E02006037	24.03%	19.01%	29.93%
E02006038	22.41%	17.65%	28.06%
E02006039	22.04%	17.35%	27.59%
E02006040	23.42%	18.44%	29.30%

*Add E0200 to MSAO map label to reference correct code in table.
 ** Confidence Level

Participation is defined as the percent of the adult population participating in at least 30 minutes of sport and active recreation (including recreational walking and cycling) of at least moderate intensity on at least 3 days a week.